

AVENUE MEDICAL  
CONSTRUCTION, LLC  
243 Quigley Blvd., Suite J  
New Castle, DE 19720  
302-674-0907  
Adam Samuel

ACCESSIBILITY EXPERTS

# CERTIFICATIONS

- **CAPS (Certified Aging in Place Specialist)**
- **NHBA (National Home Builders of America)**



Certified  
Aging-in-Place  
Specialist

# ENTRANCES & EXITS

HOW TO ACHIEVE INDEPENDENCE, SAFETY AND QUALITY OF LIFE IN YOUR HOME

PROCESS

**Client Meeting  
Goals**

**Home Assessment  
Report/Recommendations**

**Floor Plans**

**Architect Plans**

**Permitting**

**Job Site Management**

**Turn-Key Solution**

# RAMPS Primary and Secondary Egress



# RAMP CONSTRUCTION



# DOORWAY WIDENING INTERIOR OR EXTERIOR





Pocket Door  
allows user to  
enter and exit  
easily. Zero  
threshold from  
floor to floor.

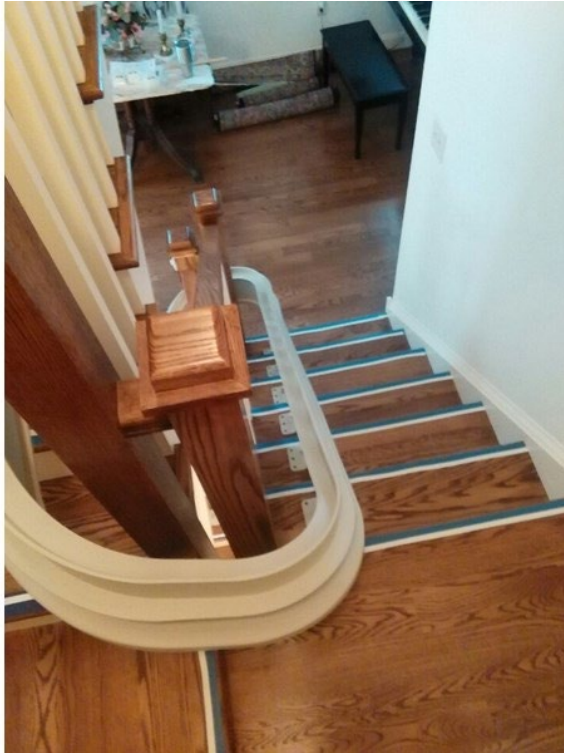




# STAIR LIFT



# CUSTOM CURVED STAIR LIFT



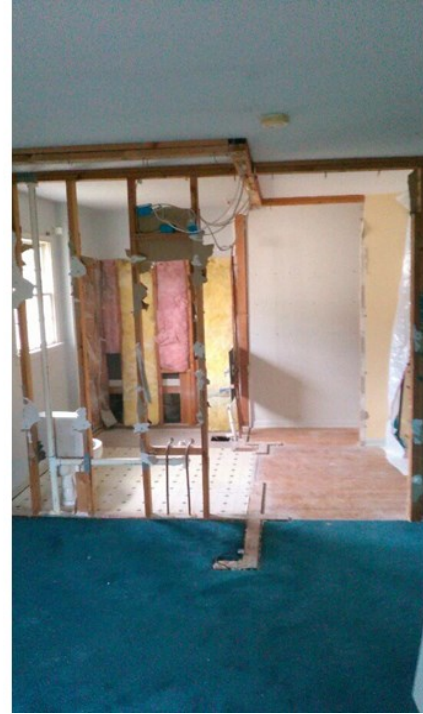
# VPL (VERTICAL PLATFORM LIFT)



# Secondary or Primary Egress



# BATHROOM RENOVATIONS







**ROLL-IN SHOWER ACRYLIC**



## ZERO ENTRY SHOWER

**ROLL UNDER VANITY**

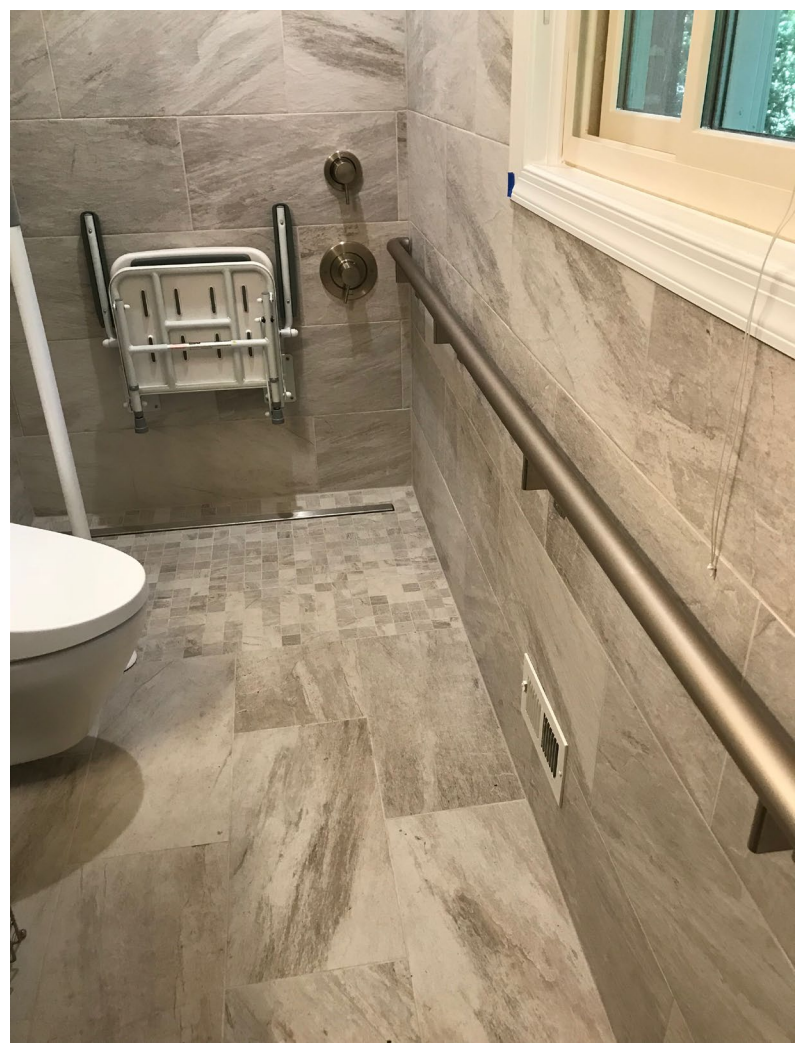




**European Wet Room**  
**Before**









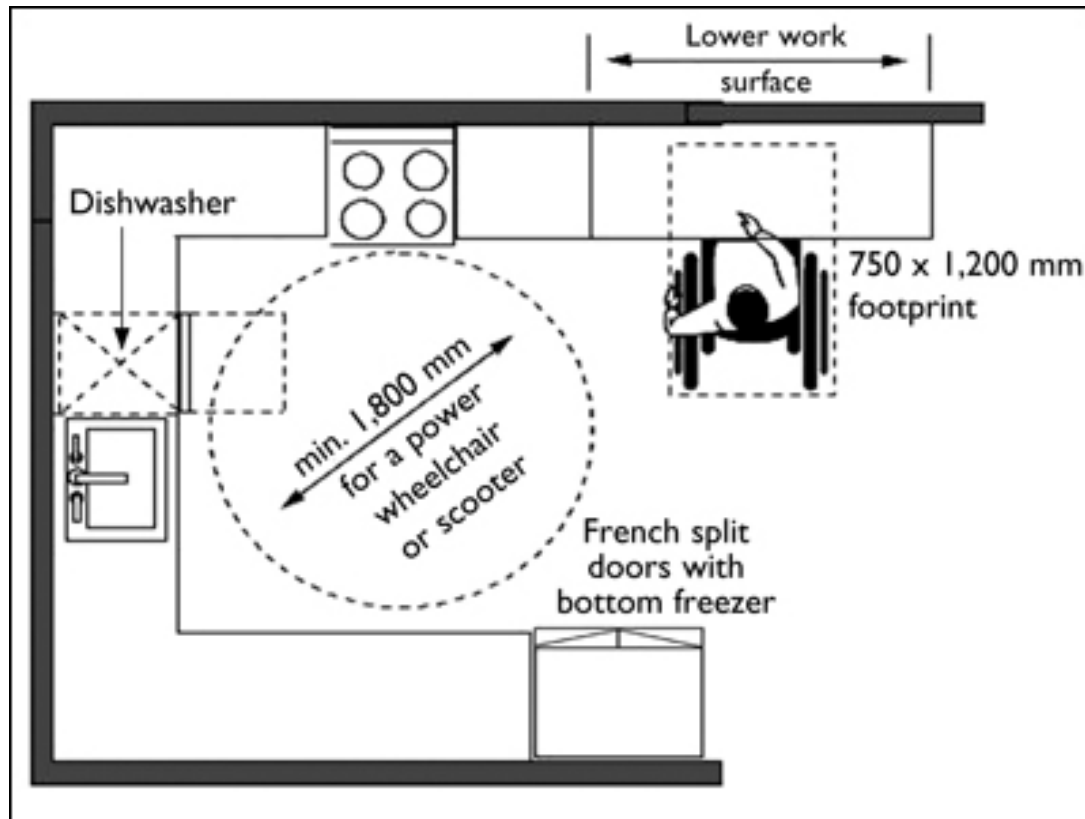
BEFORE PHOTO OF A  
GARDEN/JACUZZI  
STYLE TUB



AFTER PHOTO  
IS A SAFE  
ACCESSIBLE  
WALK-IN TUB



# DIAGRAM OF AN ACCESSIBLE KITCHEN







# CEILING LIFT

- ❖ Ideal solution for lifting and moving people from one place to another in all kinds of care environments
- ❖ With it mounted on the ceiling, you keep the floor space uncluttered
- ❖ Can be mounted in virtually any indoor space & reach anywhere in any room
- ❖ Weight range between 300lbs – 1000lbs



**Thank You for having us!**

